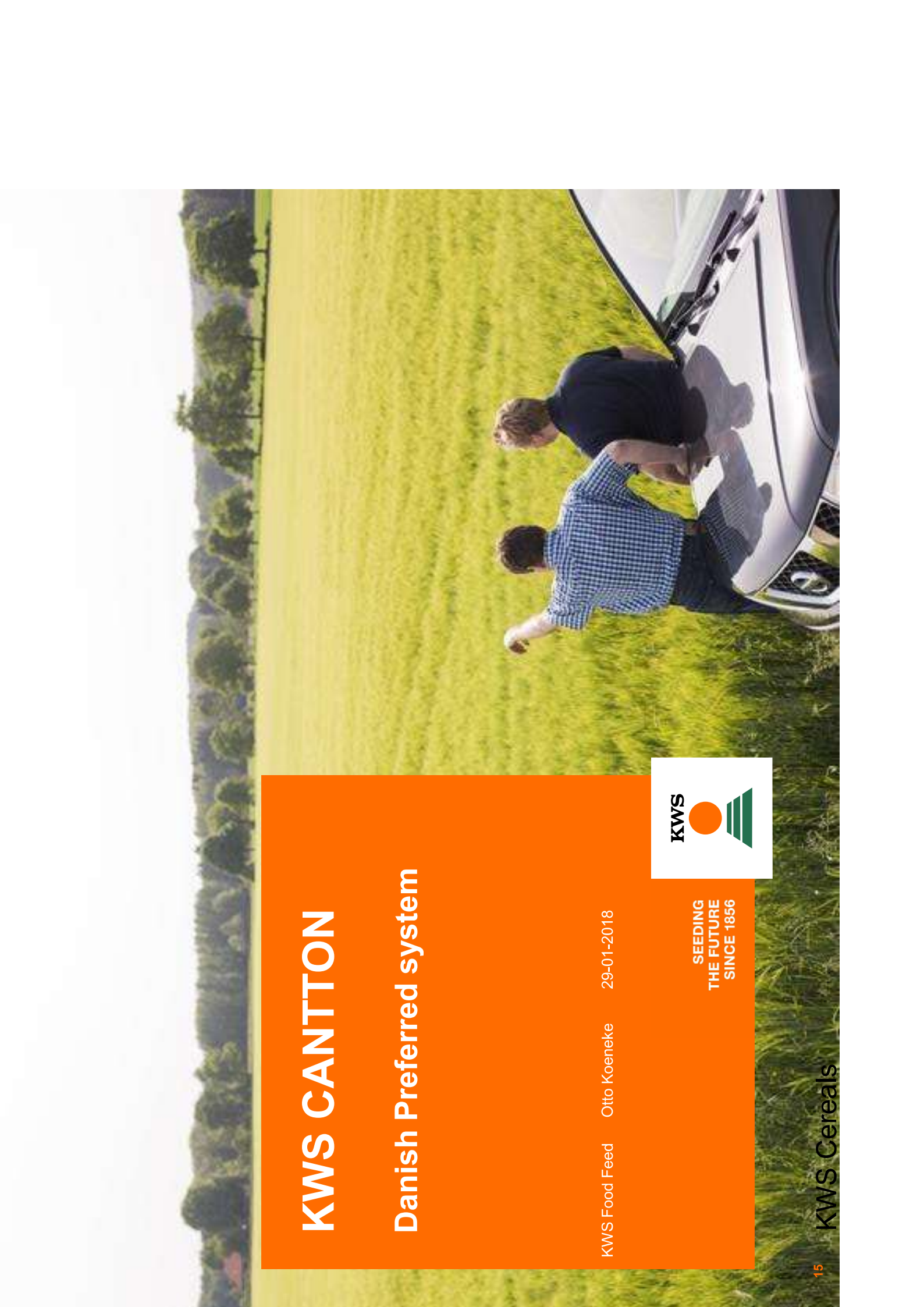


KWS CANTTON

Danish Preferred system

KWS Food Feed Otto Koeneke 29-01-2018

SEEDING
THE FUTURE
SINCE 1856



New variety combining high yield and quality

- New malting barley with both high yield and quality
- High stability across regions and harvest years
- Good all round resistance package, including Mlo
- Longer straw and also suitable for organic farming
- Cross: Tamtam x SJ 56007

KWS Cantton is a new and very promising malting barley, which combines a very high yield with very good quality for malting. The variety is tested in the Danish Preferred program during the winter 2017/18.

The variety offers a very strong agronomy package is well with excellent straw abilities along with a strong all round resistance to the most common diseases. This includes Mlo and double nematode resistance. The combination with a little longer straw makes KWS Cantton suitable for organic growing conditions as well.

KWS CANTTON	
Yield , relative (Farmers union trials)	
All Denmark (2017)	101
All Denmark (2015-17)	102
Disease resistance, score -1 to 3 (obs plots)	
Mildew	-1
Barley rust	3
Scald	2
Net & Spot blotch	2
Nematode resistant	Yes
Agronomy (obs)	
Lodging, score 0-10	1,0
Ear breaking, score 0-10	1,0
Straw breaking, score 0-10	2,5
Straw length, cm	67
Ripening date	7/8
Quality (Farmers union trials)	
Grading, % > 95 mm	95
HL-weight, kg/hl	65,0
Protein, %	11,3

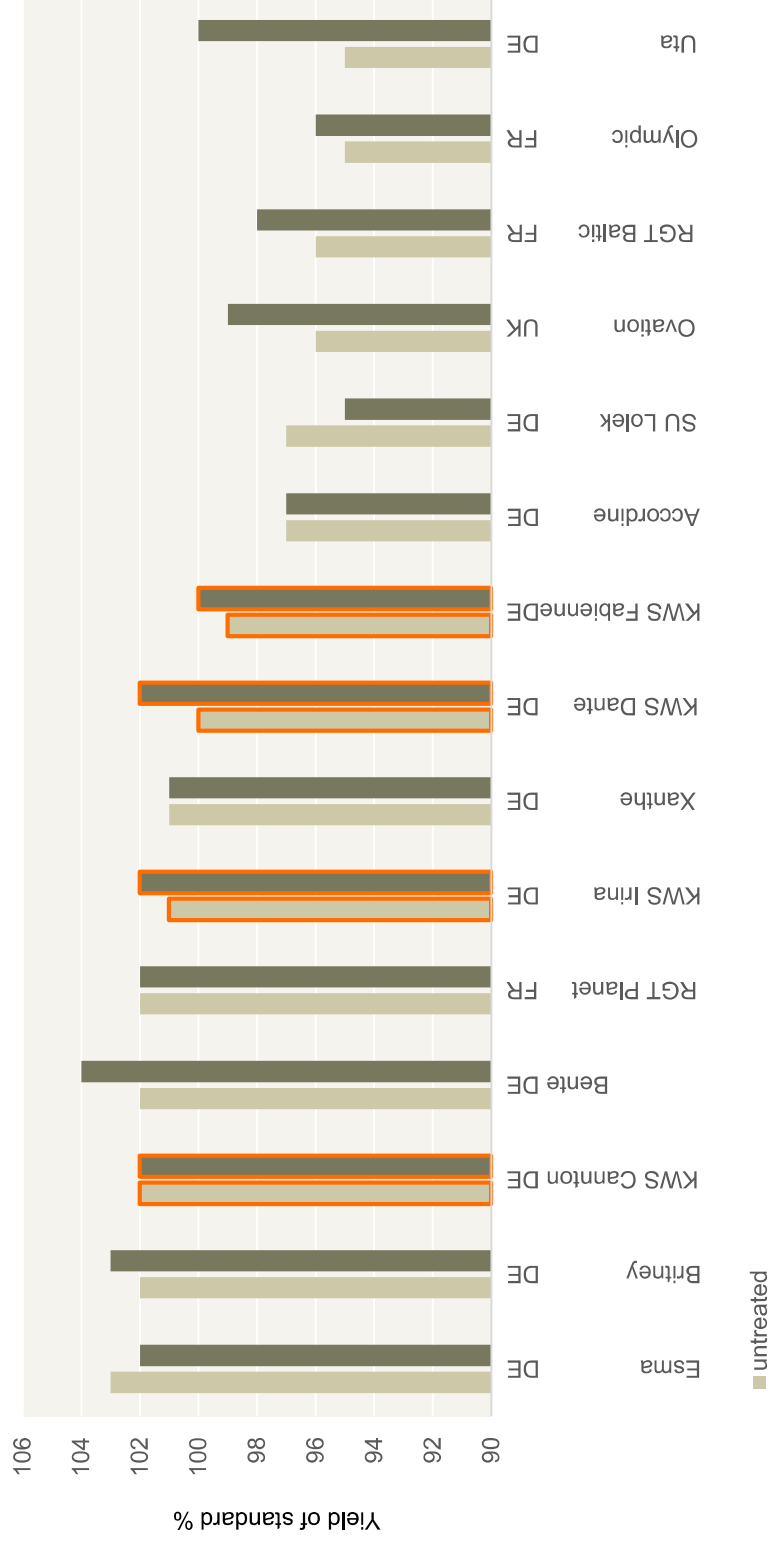
Source: www.sortinfo.dk

Denmark 2017: Trials and market shares 2017

	LSV Dänemark		Saatvermehrung DK 2017			Qual.system "Danish Preferred"
	2017	mehrfährig	(ha)	(%)	Rang	
RGT Planet	103	104	6141	25%	1	
KWS Irina	99	101	5119	21%	2	als Standardsorte (DLG)
Evergreen	99	100	3956	16%	3	
Laurikka	97	102	2463	10%	4	
Flair	102	102	2394	10%	5	
Crossway	99	100	1175	5%	6	
Laureate	105	105	609	2%	7	
KWS Cantton	100	101	575	2%	8	angemeldet (Nielsen & Smith)
Odyssey	96	99	360	2%	9	
KWS Beckie	101	101	234	1%	10	angemeldet (DLA)
Charles	98	98	196	1%	11	
KWS Fantex	101	99	185	1%	12	angemeldet (Nielsen & Smith)
Dragoon	105	103	182	1%	13	
Embrace	105	104	155	1%	14	
Cosmopolitan	103	103	126	1%	15	

- **KWS FANTEX in Poland/Germany**
 - Tests with MALTEUROP group crop 2017 and 2018.

Poland 2017 FUT spring barley, harvest 2017



KWS Cantton/KWS Fantex/KWS Beckie : KWS internal micromalting results (VLB Berlin, crop 2015)



	Erntejahr	Extrakt, VZ65 [% TrS]	Viskosität VZ 65°C (8,6 %) [mPas*s]	Eiweißgehalt [% TrS]	löslicher Stickstoff VZ65 [mg/100 g TrS]	Eiweißlösungsgrad VZ65 [%]	FAN VZ65 [mg/l]	Trübung VZ65 EBC	sch. Endvergärung VZ65 [%]	Mürbigkeit [%]	Beta-Glucan (FlAVZ 65°C) [mg/l]	Alpha-Amylase Aktivität [DU/g TrS]	Beta-Amylase Aktivität [BU/g TrS]	Extract corrected to 10,5 Protein	Fria corrected to 10,5% protein
KWS Irina	2015	80,2	1,47	11,2	1058	59,0	174	2,1	87,8	86	131	51	951	80,7	89
Quench	2015	81,1	1,49	11,6	799	43,0	162	2,4	86,7	90	93	54	1038	81,8	94
Sebastian	2015	80,6	1,53	11,4	736	40,0	167	2,0	86,4	81	135	69	1156	81,2	85
RGT Planet	2015	81,7	1,47	10,5	738	44,0	163	3,7	85,9	90	73	57	702	81,7	90
Conchita	2015	81,8	1,48	10,6	652	38,0	158	2,1	87,7	90	162	67	844	81,9	90
KWS CANTTON	2015	82,5	1,46	9,8	699	45,0	145	2,5	89,0	95	71	57	710	82,0	92
KWS FANTEX	2015	82,5	1,44	9,4	686	46,0	146	2,0	88,0	95	68	58	770	81,8	91
KWS BECKIE	2015	82,8	1,46	10,2	695	43,0	155	2,7	86,2	95	95	51	824	82,6	94

KWS Cantton : Official trials Germany 2014

(VLB Berlin, 8 sites)



WP 1 2014	Sortierung 2,8mm	Prot %	Extrakt %	Kolbach	Friability	Viscosity	Final attenuation	Alpha Amylase	Beta Amylase	FAN	Beta- Glucan
n =	8	8	8	8	8	8	8	8	8	8	8
MARTHE	82	9,5	83,4	47	90,8	1,55	88	85	1.049	141	237
QUENCH	76	8,9	83,4	49,1	92,9	1,53	88	81	898	137	219
GRACE	77	9,4	82,7	47,3	92,4	1,5	87,3	93	834	150	129
mean 1-3	78	9,3	83,2	47,8	92	1,52	87,8	86	927	143	195
KWS Cantton	84	8,8	84,3	52,3	94,8	1,49	88,7	72	724	149	146
KWS Fantex	79	8,6	84,2	49,6	93,2	1,49	87,5	72	704	151	193

Strong through barley !

